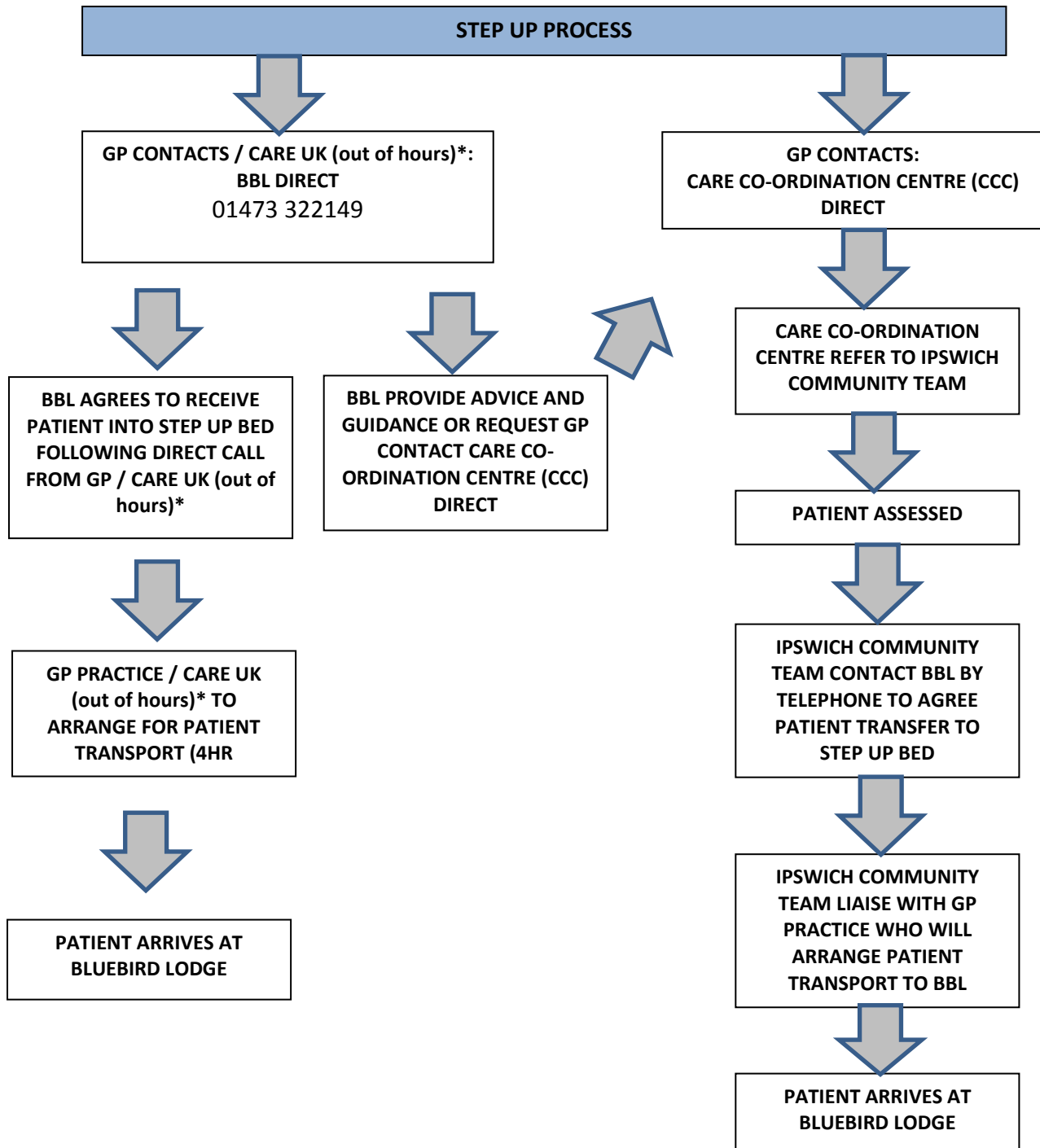


**FOUR-MONTH PILOT AT BLUEBIRD LODGE (BBL) TO SUPPORT ADMISSION AVOIDANCE
JUNE – SEPT 2015 (commencing 1 June 2015)**

The focus is to 'protect' up to eight beds as part of a four-month pilot at Bluebird Lodge for the provision of step up (GP and community) and step across (ED and EAU) care to support admission avoidance. The pilot period would then be followed by a brief evaluation to inform 2015/16 resilience planning.



*In addition to usual week day referrals, the referral process for the Bluebird Lodge pilot will also include the opportunity for out of hours referrals to be considered by the team at Bluebird Lodge Community Hospital during the daytime at weekends (Saturday – Sunday 9:00am – 5:00pm only). (Usual referral criteria for the admission avoidance pilot will still apply).

